



All luminaires are also available with other standard plugs.

ALDEBARAN® SERIES 1000

- The mobile work light of the **ALDEBARAN®** series 1000 made by Setolite is applicable in almost every area where an energy saving illumination is needed.
- The lamp of the series 1000 is not only characterised by the used high-quality materials and the long life time resulting from this, but also by the enormous luminosity which is (verifiably) easily on the same level as a 500 W halogen lamp. Just like with the halogen lamp, the 2x55 W version reaches light intensities of up to 9600 Lm, but without causing fire hazard because the used illuminants create just little warmth. The flicker-free, homogeneous light, as well as the long life time of approx. 20,000h are more striking features of this work light.
- The work light, which is optionally available with different voltages as well, is used by our costumers for various purposes: DRK and THW (www.thw-viersen.de/berichte/2005/01-29/) and other aid organisations use the lamp at operations and practices.
- The Bundeswehr and other European armies use our products for the temporary illumination of tents or on tripods for the lighting of bigger areas or similar environments.

Technical Data

Electrical Data	2 x 36 W - Dimmable	2 x 55 W - Dimmable	2 x 36 W / E	2 x 55 W / E	2 x 80 W / E
Operating voltage	220 - 240 V AC	220 - 240 V AC	220 - 240 V AC	220 - 240 V AC	220 - 240 V AC
Rated current	0,34 A	0,52 A	0,33 A	0,5 A	0,71 A
Ballast	EVG - dimmable up to 75 % of performance		EVG	EVG	EVG
Photometric Data					
Illuminant	2 x PL-L 36 W / 840	2 x PL-L 55 W / 840	2 x PL-L 36 W / 840	2 x PL-L 55 W / 840	2 x PL-L 80 W / 840
Luminous flux.	5.800 lm	9.600 lm	5.800 lm	9.600 lm	12.000 lm
Life time approx.	20.000 hrs	20.000 hrs	20.000 hrs	20.000 hrs	20.000 hrs
General Data					
Dimensions (LxWxH) approx.	485 x 190 x 145 mm	610 x 190 x 145 mm	485 x 190 x 145 mm	610 x 190 x 145 mm	645 x 190 x 145 mm
Weight approx.	2,65 kg	3,55 kg	2,9 kg	3,2 kg	3,6 kg
Item-No.:	1410230363	1410230553	1410230361	1410230551	1410230801

Note: Aside from this standard version, there are also dimmable versions, specifically for (military) hospital tents, available. Even emergency light versions are available, in several sizes and wattages.

The **ALDEBARAN®** series 1000 is also available

- with opposite socket
- with other plugs, CEE, Swiss, England, France plug etc.
- with IP 68 socket
- with other voltages 12, 24, 48, 110, 230 or 400V

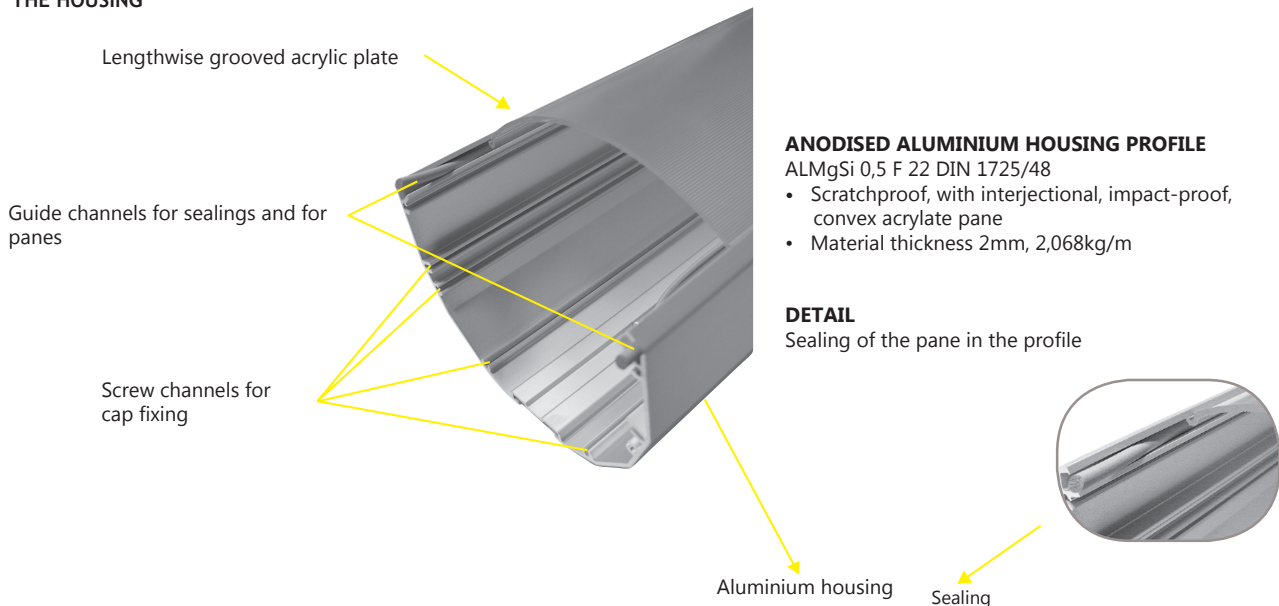
Features

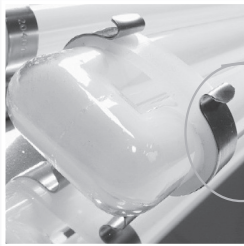
- More than 75% energy saving due to energy saving illuminants (2G11 sockets)
- Low heat emission – no fire hazard
- Shock- and vibration-proof
- Well dimmed, steady, flicker-free light

ALDEBARAN® SERIES 1000

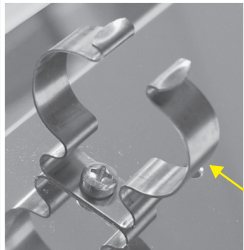
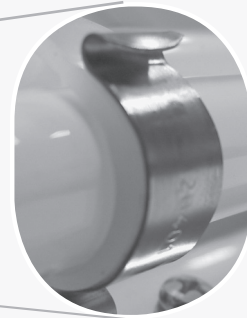
We have set ourselves the target of developing long lasting, technically and mechanically faultless lighting systems. At the same time, these systems should be universally usable even under difficult, challenging conditions. The result of this development bears the name **ALDEBARAN®**.

THE HOUSING



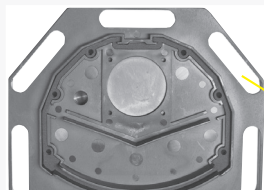


Tight fit of the tube head by additional mounting of a soft silicone ring.



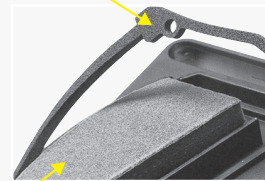
A tube holder made of spring steel provides optimal bracketing of the tube

END CAP



5 suspension eyelets

Neoprene cap sealing
between aluminium housing and
closing cap



Foam cushion
protecting the tubes against falls

THE REFLECTOR

The front side of the high-polished aluminium reflector functions as carrier for the TCL tubes incl. socket and holder. The back side serves as carrier for ballasts, starters and connecting terminals. The wiring consists of specially designed, temperature-proof single core.

HIGH-POLISHED ALUMINIUM REFLECTOR

Specifications: AL 99.85 | Material thickness: 1mm | Weight: 3,0kgs/m²

► **Photometric Data**

